

Screen Copy Printout Operator's Manual

1st Edition:	August, 2003
2nd Edition:	January, 2004
3rd Edition:	August, 2004
4th Edition:	March, 2005
5th Edition:	May, 2008

DENSO CORPORATION

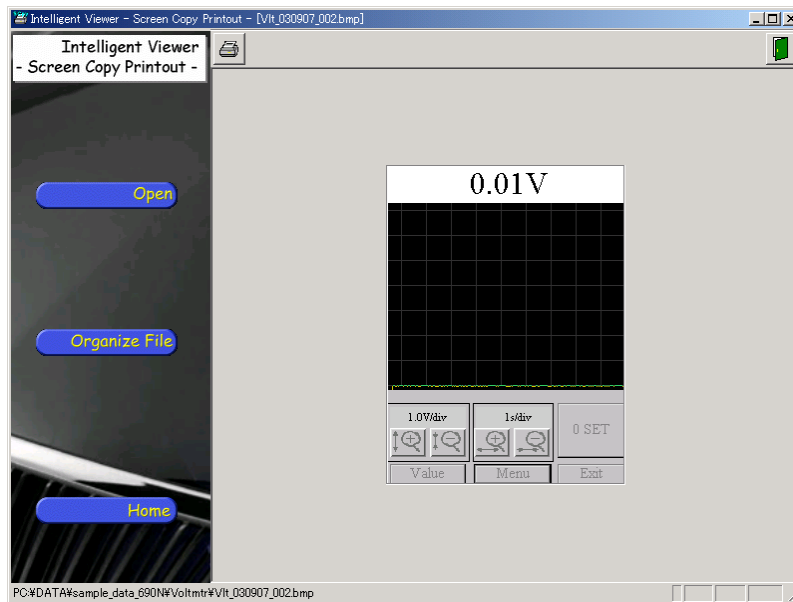
Contents

1. Outline of Screen Copy Printout	3
2. Setup.....	4
3. Screen Copy Printout Startup Method	5
4. Screen Copy Printout Menu.....	6
5. Print Data Display	7
5.1. Selecting print data.....	7
5.2. Outline of the print preview screen	9
6. Arrangement of Files.....	11
6.1. Arrangement of files	11
7. Quit	14

1. Outline of Screen Copy Printout

With Screen Copy Printout, you can use a PC to display and print screen image files stored on Intelligent Tester II. Therefore, you can perform data processing operations, such as aggregation of data (ECU data, oscilloscope waveforms, etc.) or preparation of reports, in a more efficient manner.

- You can transfer screen image files from Intelligent Tester II to a PC.
- You can display and print screen image files stored on a PC.
- Direct access to screen image files stored on Intelligent Tester II will be available with a PC, making it possible to display and print the data.



2. Setup

This section describes how to connect Intelligent Tester II to a PC.

This will make it possible to use the Screen Copy Printout program to print image data stored on Intelligent Tester II.

1 Connect Intelligent Tester II to the PC.

Connect Intelligent Tester II to the AC/DC adapter.

(If the internal battery is fully charged, you can perform these operations without connecting the AC/DC adapter.)

Bring a suitable USB Cable. Connect one end of the cable to the USB port of Intelligent Tester II and the other to one of the USB ports on the PC.

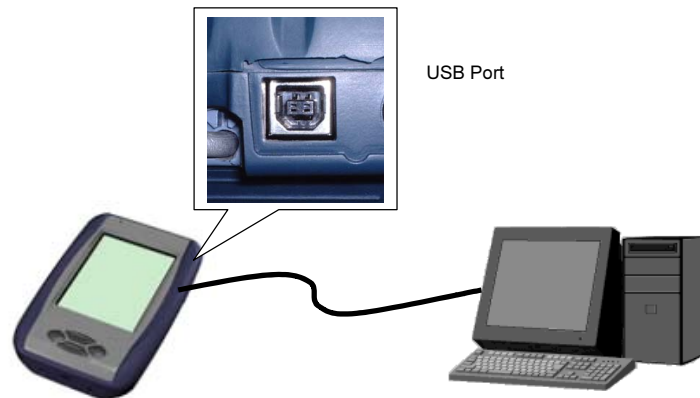



Fig. 2-1: Intelligent Tester II - PC Connection

Note: You will need to install the USB driver for Intelligent Tester II before you can use USB communications.

3. Screen Copy Printout Startup Method

This section describes how to start the Screen Copy Printout program.

- 1 Start the Intelligent Viewer program and click the  button to activate Screen Copy Printout.

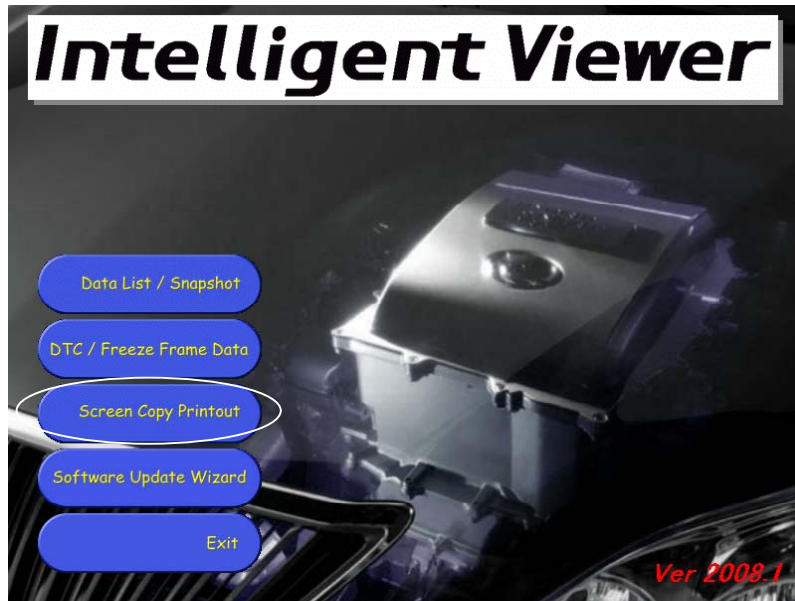


Fig. 3-1: Intelligent Viewer Program

- 2 The Screen Copy Printout main screen appears.

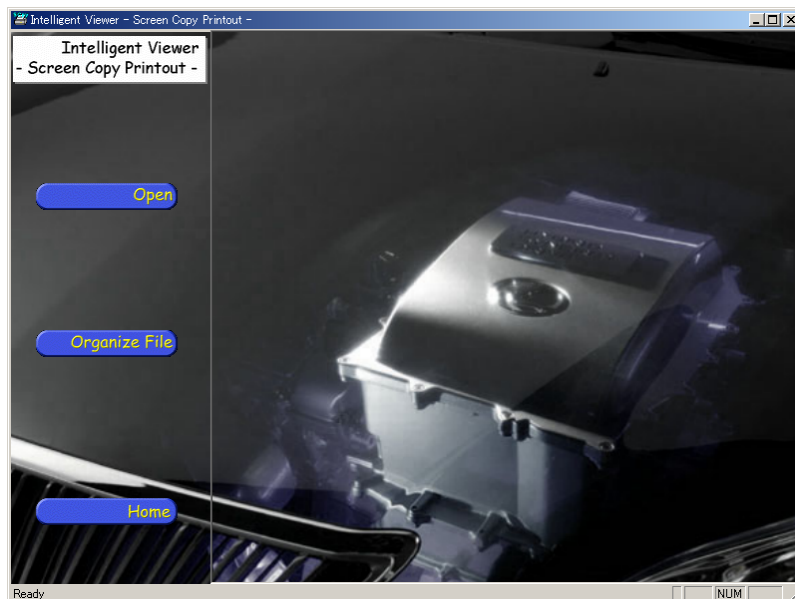


Fig. 3-2: Screen Copy Printout Main Screen

4. Screen Copy Printout Menu

This menu is used to execute functions available with Screen Copy Printout.

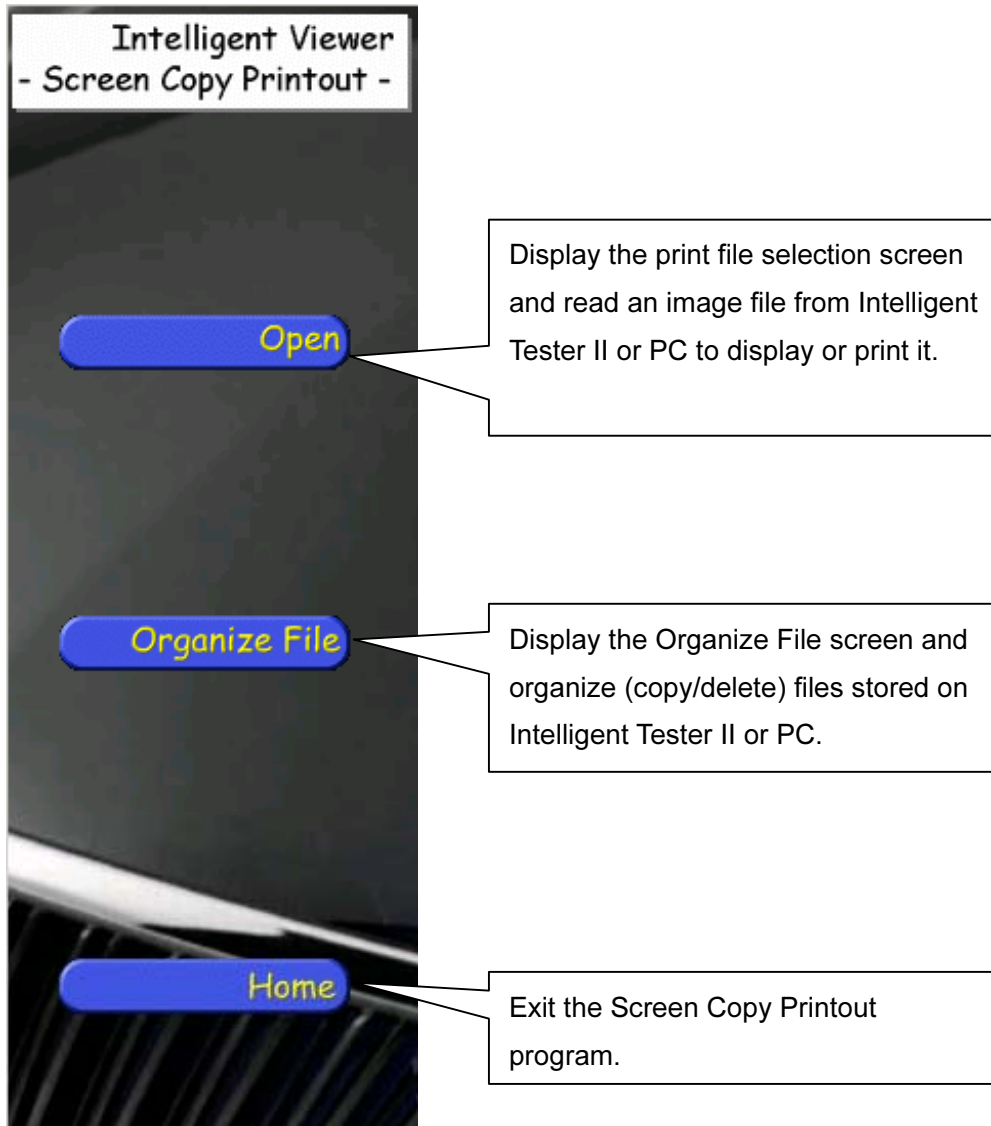



Fig. 4-1: Screen Copy Printout Menu

5. Print Data Display

Using the print data display function, you can print image data stored on Intelligent Tester II or PC while checking it on the PC.

5.1. Selecting print data

- 1 Select a file.

Click the  button in the Screen Copy Printout menu area to display the print file selection screen.

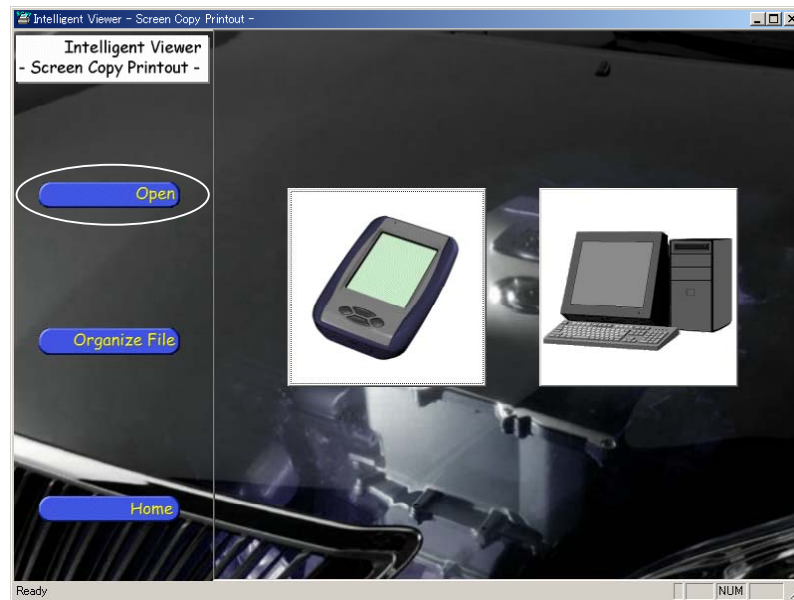


Fig. 5-1-1: Print File Selection Screen

2-1 Display image data stored on Intelligent Tester II.

Click the Intelligent Tester II button to display the file selection dialog box.

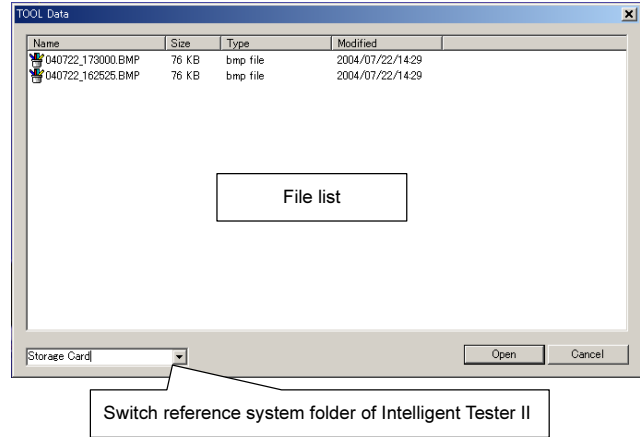


Fig. 5-1-2: Intelligent Tester II Button Fig. 5-1-3: Intelligent Tester II File Selection Dialog Box

Select the desired file from the Intelligent Tester II file selection dialog list and then click the Open button.

You can switch the Intelligent Tester II reference system folder to either “System Memory” (built-in CF) or “Storage Card” (external CF) from the list box at the bottom left of the dialog box.

2-2 Display file data stored on the PC.

Click the PC button to display the file selection dialog box.

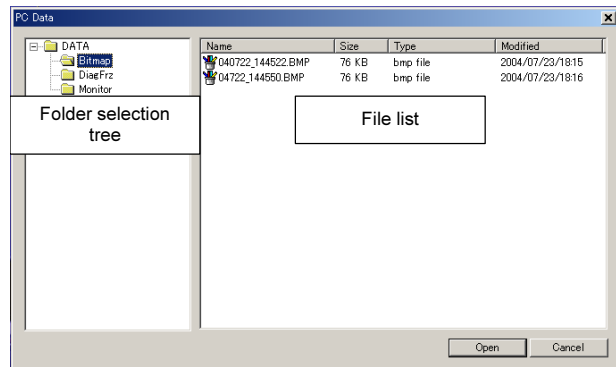


Fig. 5-1-4: PC Button

Fig. 5-1-5: PC File Selection Dialog Box

Select the desired file from the PC file selection dialog list and then click the Open button.

5.2. Outline of the print preview screen

After selection of the desired file, the print preview screen appears, displaying the selected image data.

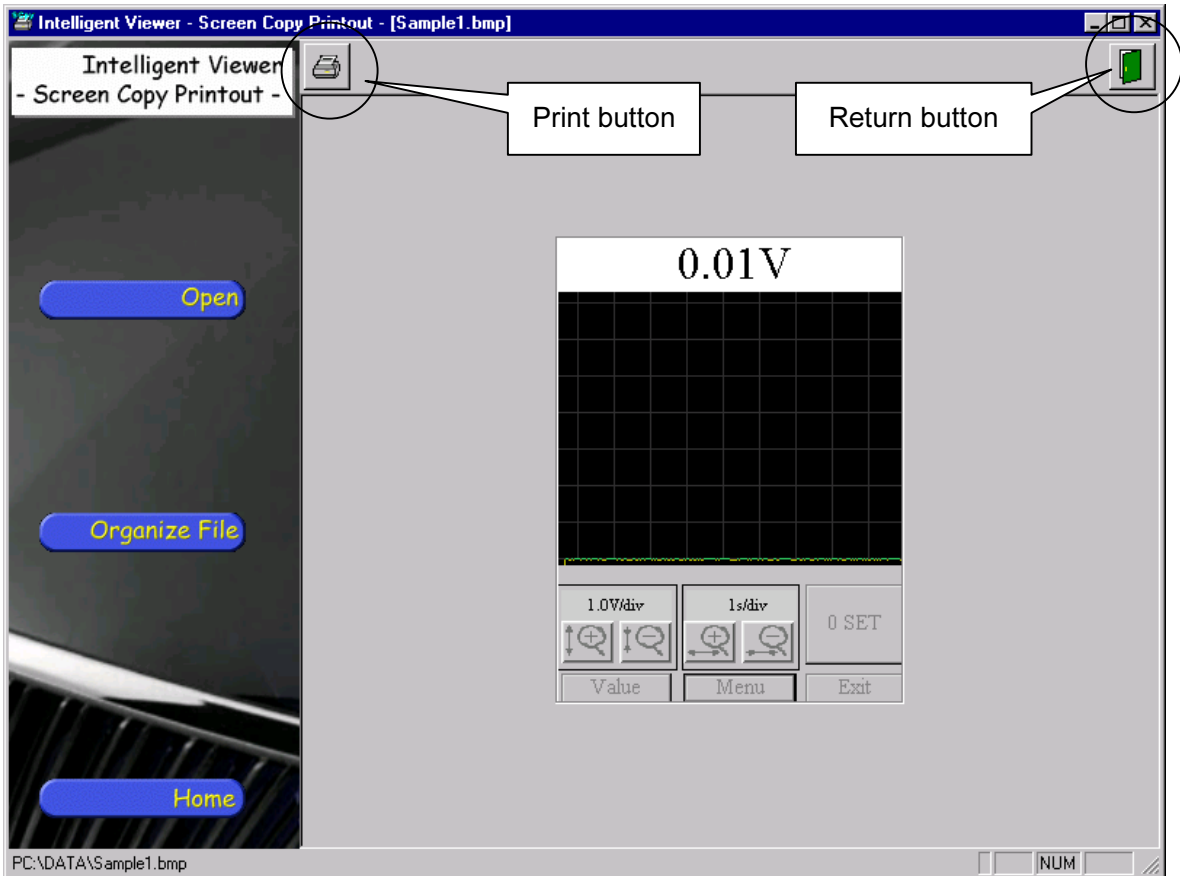




Fig. 5-2-1: Print Preview Screen


Description of the shortcut icons:

Icon	Function	Description
	Print	Prints screen image data.
	Return	Closes the print preview screen and returns to the main screen.

1 Print image data.

You can print the image data being displayed on the screen.




Click the  (Print) button to display the print dialog box.

Perform the necessary settings such as the paper size and number of copies and then execute the print command.

2 Exit the print preview screen.



Click the  (Return) button to exit the print preview screen.

The main screen will reappear.

6. Arrangement of Files

6.1. Arrangement of files

You can organize (copy or delete) data files stored on Intelligent Tester II or PC.

Click **Organize File** button in the Screen Copy Printout menu area to display the Organize File screen.

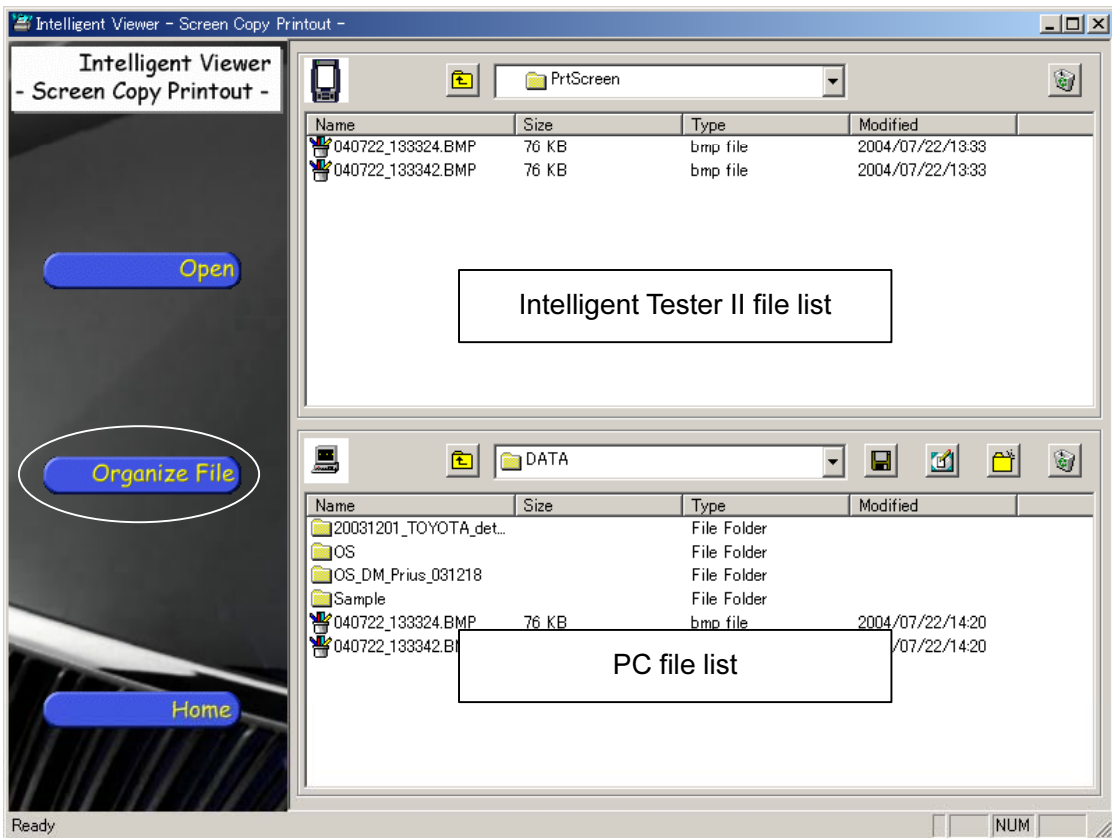









Fig. 6-1-1: Organize File Screen

Description of the shortcut icons:

Icon	Function	Description
	Up one level	Displays the next level up in the folder structure.
	Save on floppy disk	Copies selected files to floppy disks.
	Save on desktop	Copies selected file to the desktop.
	Create new folder	Creates new folders.
	Delete file	Deletes selected files.
	Select folder	Moves to another folder.

1 To delete a file from Intelligent Tester II:

Select the file to be deleted and click the  (Delete file) button above the Intelligent Tester II file list to delete it. Please note that a file cannot be recovered once you delete it.

2 To copy a file from Intelligent Tester II to the PC:

Select the file in Intelligent Tester II to be copied and drag it to the PC file list. The progress indicator will appear and the file copying operation from Intelligent Tester II to the PC will start. (The time required to copy varies according to the file size and the Intelligent Tester II connection method.) After the file has been copied, the progress indicator will disappear and the file will be displayed on the PC file list.

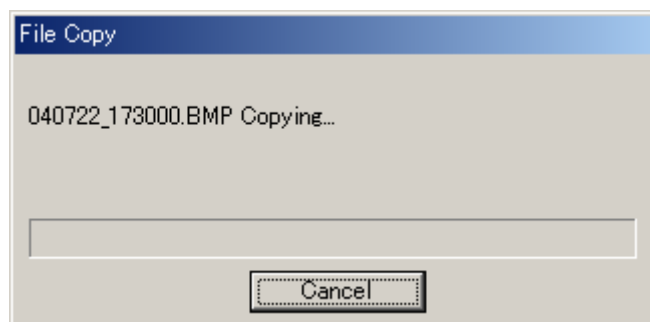




Fig. 6-1-2: Progress Indicator


3 To delete a file from the PC:

Select the file to be deleted and click the  (Delete file) button above the PC file list to delete it. Please note that a file cannot be recovered once you delete it.

4 To copy a file from the PC to a floppy disk:

Select the file to be copied and click the  (Save on floppy disk) button above the PC file list to copy it.
After operation of the floppy disk, check its contents to make sure that the file has been copied successfully.

5 To copy a file from the PC to the desktop:

Select the file to be copied and click the  (Save on desktop) button above the PC file list to copy it.
Make sure that the file is displayed on the desktop.

6 To create a new folder on the PC:



Click the  (Create new folder) button above the PC file list.
The Create New Folder dialog box will appear; input a folder name and then click the OK button to create the folder.




Fig. 6-1-3: Create New Folder Dialog Box

Note: Files cannot be copied from the PC to Intelligent Tester II.

7. Quit

Click  button in the Screen Copy Printout menu area to exit.

(You can also exit the Screen Copy Printout program by clicking the  (Close) button in the upper right corner of the screen.)